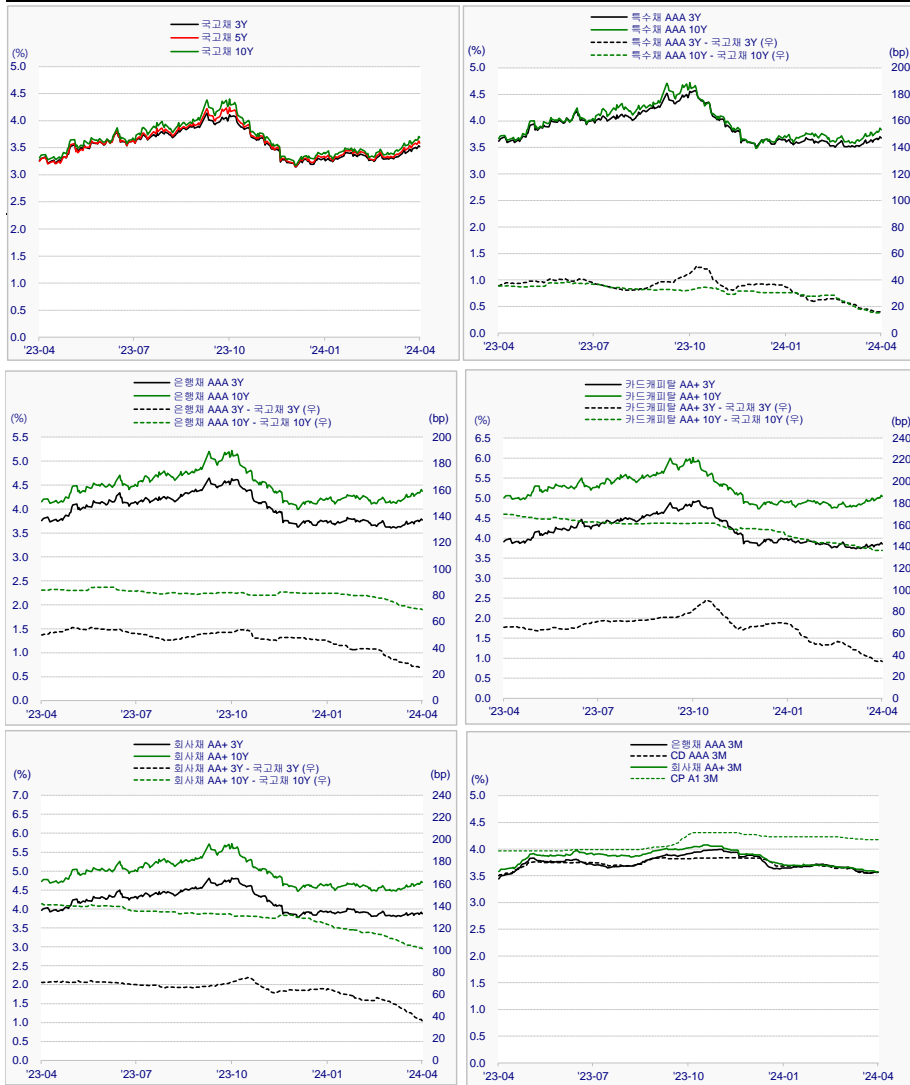


채권 종류별 주요금리



채권 종류별 스프레드

| 구분 | 3M | 6M | 9M | 1Y | 1.5Y | 2Y | 2.5Y | 3Y | 5Y | 10Y | 20Y |
|-----------------|--------------|--------------|--------------|--------------|--------------|--------------|--------------|--------------|--------------|--------------|--------------|
| 국고/통안 | 3.460 | 3.450 | 3.430 | 3.435 | 3.487 | 3.497 | 3.515 | 3.517 | 3.582 | 3.685 | 3.605 |
| 주고/주저 | 3.460/3.450 | 3.450/3.440 | 3.430/3.420 | 3.435/3.420 | 3.500/3.470 | 3.520/3.495 | 3.545/3.495 | 3.540/3.477 | 3.625/3.550 | 3.710/3.590 | 3.615/3.490 |
| 월고/월저 | 3.470/3.440 | 3.450/3.380 | 3.430/3.340 | 3.435/3.320 | 3.500/3.350 | 3.520/3.335 | 3.545/3.312 | 3.540/3.292 | 3.625/3.320 | 3.710/3.377 | 3.615/3.350 |
| 연고/연저 | 3.470/3.380 | 3.450/3.355 | 3.430/3.290 | 3.435/3.275 | 3.500/3.310 | 3.520/3.260 | 3.545/3.210 | 3.540/3.195 | 3.625/3.227 | 3.710/3.285 | 3.615/3.215 |
| 공사채(AAA) | 3.519 | 3.551 | 3.607 | 3.622 | 3.624 | 3.638 | 3.656 | 3.677 | 3.709 | 3.837 | 3.841 |
| SPREAD | 0.059 | 0.101 | 0.177 | 0.187 | 0.137 | 0.141 | 0.141 | 0.160 | 0.127 | 0.152 | 0.236 |
| 전일비 | 0.000 | 0.000 | 0.000 | 0.000 | -0.008 | -0.018 | -0.030 | -0.023 | -0.043 | -0.025 | -0.010 |
| 전주비 | 0.005 | 0.000 | 0.010 | 0.020 | 0.032 | 0.007 | 0.017 | 0.035 | 0.027 | 0.095 | 0.110 |
| 전월비 | -0.050 | -0.020 | 0.035 | 0.055 | 0.092 | 0.107 | 0.120 | 0.151 | 0.177 | 0.205 | 0.168 |
| 주고/주저 | 3.524/3.514 | 3.561/3.551 | 3.607/3.597 | 3.622/3.602 | 3.632/3.592 | 3.656/3.631 | 3.686/3.639 | 3.700/3.642 | 3.752/3.682 | 3.862/3.742 | 3.851/3.731 |
| 월고/월저 | 3.579/3.499 | 3.596/3.526 | 3.627/3.517 | 3.622/3.517 | 3.632/3.487 | 3.656/3.491 | 3.686/3.503 | 3.700/3.506 | 3.752/3.554 | 3.862/3.577 | 3.851/3.621 |
| 연고/연저 | 3.779/3.499 | 3.796/3.526 | 3.757/3.557 | 3.697/3.517 | 3.687/3.487 | 3.666/3.491 | 3.686/3.503 | 3.700/3.504 | 3.752/3.502 | 3.862/3.577 | 3.851/3.556 |
| 산상채(AAA) | 3.531 | 3.575 | 3.621 | 3.636 | 3.639 | 3.625 | 3.611 | 3.635 | 3.756 | 4.276 | 4.360 |
| SPREAD | 0.071 | 0.125 | 0.191 | 0.201 | 0.152 | 0.128 | 0.096 | 0.118 | 0.174 | 0.591 | 0.755 |
| 전일비 | 0.005 | 0.005 | 0.005 | 0.000 | -0.008 | -0.013 | -0.030 | -0.023 | -0.043 | -0.030 | -0.010 |
| 전주비 | 0.010 | 0.020 | 0.035 | 0.045 | 0.047 | 0.027 | 0.022 | 0.040 | 0.027 | 0.085 | 0.105 |
| 전월비 | -0.080 | -0.015 | 0.050 | 0.075 | 0.102 | 0.142 | 0.155 | 0.156 | 0.142 | 0.205 | 0.173 |
| 주고/주저 | 3.531/3.521 | 3.575/3.555 | 3.621/3.586 | 3.636/3.591 | 3.647/3.592 | 3.638/3.598 | 3.641/3.589 | 3.658/3.595 | 3.799/3.729 | 4.306/4.191 | 4.370/4.255 |
| 월고/월저 | 3.601/3.511 | 3.595/3.525 | 3.621/3.536 | 3.636/3.491 | 3.647/3.487 | 3.638/3.443 | 3.641/3.428 | 3.658/3.454 | 3.799/3.554 | 4.306/4.021 | 4.370/4.130 |
| 연고/연저 | 3.811/3.511 | 3.785/3.525 | 3.726/3.536 | 3.661/3.491 | 3.652/3.487 | 3.638/3.443 | 3.641/3.428 | 3.659/3.454 | 3.799/3.554 | 4.306/3.994 | 4.370/4.040 |
| 은행채(AAA) | 3.569 | 3.614 | 3.657 | 3.670 | 3.672 | 3.682 | 3.704 | 3.770 | 3.934 | 4.376 | 4.458 |
| SPREAD | 0.109 | 0.164 | 0.227 | 0.235 | 0.185 | 0.185 | 0.189 | 0.253 | 0.352 | 0.691 | 0.853 |
| 전일비 | 0.005 | 0.005 | 0.005 | 0.000 | -0.008 | -0.013 | -0.030 | -0.023 | -0.043 | -0.030 | -0.010 |
| 전주비 | 0.010 | 0.020 | 0.035 | 0.045 | 0.052 | 0.027 | 0.022 | 0.035 | 0.027 | 0.085 | 0.105 |
| 전월비 | -0.090 | -0.015 | 0.045 | 0.070 | 0.097 | 0.127 | 0.125 | 0.141 | 0.127 | 0.205 | 0.163 |
| 주고/주저 | 3.569/3.559 | 3.614/3.594 | 3.657/3.622 | 3.670/3.625 | 3.680/3.620 | 3.695/3.655 | 3.734/3.682 | 3.793/3.735 | 3.977/3.907 | 4.406/4.291 | 4.468/4.353 |
| 월고/월저 | 3.649/3.549 | 3.634/3.564 | 3.657/3.577 | 3.670/3.530 | 3.680/3.515 | 3.695/3.510 | 3.734/3.546 | 3.793/3.604 | 3.977/3.737 | 4.406/4.121 | 4.468/4.228 |
| 연고/연저 | 3.864/3.549 | 3.839/3.564 | 3.782/3.577 | 3.710/3.530 | 3.715/3.515 | 3.700/3.510 | 3.757/3.546 | 3.824/3.604 | 3.977/3.737 | 4.406/4.099 | 4.468/4.153 |
| 카드채(AA+) | 3.577 | 3.639 | 3.703 | 3.753 | 3.755 | 3.764 | 3.811 | 3.857 | 4.035 | 5.049 | 5.592 |
| SPREAD | 0.117 | 0.189 | 0.273 | 0.318 | 0.268 | 0.267 | 0.296 | 0.340 | 0.453 | 1.364 | 1.987 |
| 전일비 | -0.005 | -0.005 | 0.005 | 0.005 | -0.005 | -0.013 | -0.035 | -0.028 | -0.043 | -0.025 | -0.010 |
| 전주비 | 0.000 | 0.000 | 0.020 | 0.040 | 0.040 | 0.017 | 0.027 | 0.035 | 0.027 | 0.095 | 0.115 |
| 전월비 | -0.080 | -0.035 | 0.025 | 0.065 | 0.050 | 0.047 | 0.065 | 0.081 | 0.092 | 0.225 | 0.193 |
| 주고/주저 | 3.587/3.577 | 3.649/3.639 | 3.703/3.683 | 3.753/3.713 | 3.760/3.715 | 3.777/3.747 | 3.846/3.784 | 3.885/3.822 | 4.078/4.008 | 5.074/4.954 | 5.602/5.477 |
| 월고/월저 | 3.627/3.567 | 3.654/3.619 | 3.703/3.638 | 3.753/3.638 | 3.760/3.645 | 3.777/3.652 | 3.846/3.698 | 3.885/3.736 | 4.078/3.893 | 5.074/4.789 | 5.602/5.522 |
| 연고/연저 | 3.917/3.567 | 3.894/3.619 | 3.858/3.638 | 3.843/3.638 | 3.920/3.645 | 3.945/3.652 | 3.986/3.698 | 4.001/3.736 | 4.093/3.893 | 5.074/4.752 | 5.602/5.247 |
| 회사채(AAA) | 3.565 | 3.608 | 3.651 | 3.697 | 3.717 | 3.739 | 3.781 | 3.828 | 3.926 | 4.442 | 4.739 |
| SPREAD | 0.105 | 0.158 | 0.221 | 0.262 | 0.230 | 0.242 | 0.266 | 0.311 | 0.344 | 0.757 | 1.134 |
| 전일비 | 0.000 | 0.000 | 0.000 | -0.005 | -0.013 | -0.028 | -0.045 | -0.038 | -0.043 | -0.030 | -0.010 |
| 전주비 | -0.015 | -0.015 | -0.010 | 0.000 | 0.007 | -0.023 | -0.008 | 0.015 | 0.027 | 0.075 | 0.100 |
| 전월비 | -0.055 | -0.025 | 0.005 | 0.030 | 0.035 | 0.052 | 0.077 | 0.097 | 0.122 | 0.173 | 0.140 |
| 주고/주저 | 3.580/3.565 | 3.623/3.608 | 3.661/3.651 | 3.702/3.692 | 3.730/3.710 | 3.772/3.739 | 3.826/3.781 | 3.866/3.813 | 3.969/3.899 | 4.472/4.367 | 4.749/4.639 |
| 월고/월저 | 3.625/3.565 | 3.643/3.608 | 3.661/3.636 | 3.702/3.657 | 3.745/3.657 | 3.772/3.660 | 3.826/3.681 | 3.866/3.699 | 3.969/3.756 | 4.472/4.219 | 4.749/4.537 |
| 연고/연저 | 3.830/3.565 | 3.843/3.608 | 3.841/3.636 | 3.837/3.657 | 3.855/3.657 | 3.839/3.660 | 3.876/3.681 | 3.889/3.689 | 3.969/3.755 | 4.472/4.219 | 4.749/4.536 |

본 자료는 고객의 투자정보를 제공하기 위해 작성되었으며, 당사 동의 없이 복제, 배포, 전송, 변경 할 수 없습니다.

(주)에프앤프라이싱평가서비스본부 백상안 (02-721-5325)

Main table containing two columns: '국고채 증가표' and '통안채 증가표'. Each column has 17 sub-columns: 만기(Y), 종목명, KR Code, 만기일, 전일, 등락, 당일, 장외거래량, 발행액, 발행잔액, and then repeats from 만기(Y) to 발행잔액. The table lists various government bonds with their maturity dates, codes, and daily price changes.

| 당일 발행내역 | | | | | | 당일 만기내역 | | | | | |
|-------------|-----|-----|----|------|----|------------------|----------|----------|-------|-------|-----|
| (단위: 억원, %) | | | | | | (단위: 억원, %) | | | | | |
| 종목명 | 발행일 | 만기일 | 금리 | 발행금액 | 등급 | 종목명 | 발행일 | 만기일 | 금리 | 발행금액 | 등급 |
| | | | | | | JB 우리캐피탈400-3 | 20200428 | 20240426 | 1.803 | 200 | AA- |
| | | | | | | JB 우리캐피탈421-3(지) | 20210427 | 20240426 | 1.476 | 500 | AA- |
| | | | | | | JB 우리캐피탈478-1 | 20230627 | 20240426 | 4.181 | 200 | AA- |
| | | | | | | JB 우리캐피탈489-2 | 20230927 | 20240426 | 4.310 | 200 | AA- |
| | | | | | | 미래에셋캐피탈61-2 | 20220426 | 20240426 | 3.632 | 200 | AA- |
| | | | | | | 메규온캐피탈168(지) | 20220426 | 20240426 | 4.283 | 200 | A |
| | | | | | | 메규온캐피탈169(지) | 20220427 | 20240426 | 4.156 | 200 | A |
| | | | | | | 현대커머셜355-4 | 20190426 | 20240426 | 2.248 | 300 | AA- |
| | | | | | | 현대커머셜460 | 20230127 | 20240426 | 4.248 | 200 | AA- |
| | | | | | | 엔에이치농협캐피탈163-3 | 20210527 | 20240426 | 1.519 | 100 | AA- |
| | | | | | | 씨제이제일재당26-1 | 20210427 | 20240426 | 1.425 | 1,500 | AA |
| | | | | | | 알씨아이파이낸셜94 | 20210426 | 20240426 | 1.673 | 400 | A+ |
| | | | | | | SK지오센트릭18-1 | 20210427 | 20240426 | 1.554 | 1,800 | AA- |
| | | | | | | 메리츠캐피탈180-2 | 20210427 | 20240426 | 1.694 | 600 | A+ |
| | | | | | | 우리카드194-1 | 20210428 | 20240426 | 1.419 | 600 | AA |
| | | | | | | 한국투자캐피탈62-2 | 20210429 | 20240426 | 1.846 | 100 | A |
| | | | | | | 한국투자캐피탈73 | 20220426 | 20240426 | 3.943 | 200 | A |
| | | | | | | 키움캐피탈120 | 20220426 | 20240426 | 4.300 | 400 | A- |
| | | | | | | 퍼스트파이브지68차유1-12 | 20230428 | 20240426 | 3.849 | 150 | AAA |
| | | | | | | 터월드재구심사차유1-4 | 20231226 | 20240426 | 4.033 | 100 | AAA |
| | | | | | | 퍼스트파이브지73차유1-1 | 20240326 | 20240426 | 3.727 | 50 | AAA |